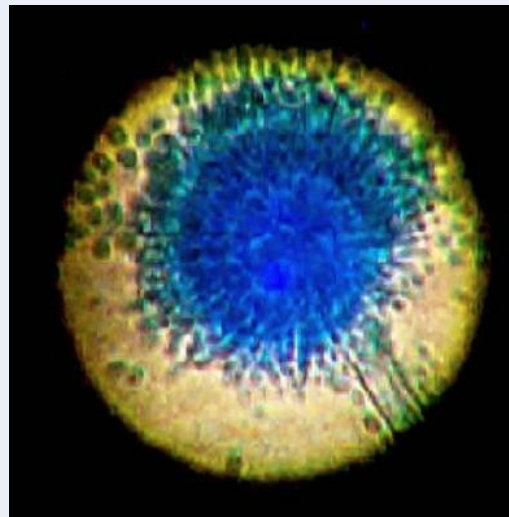
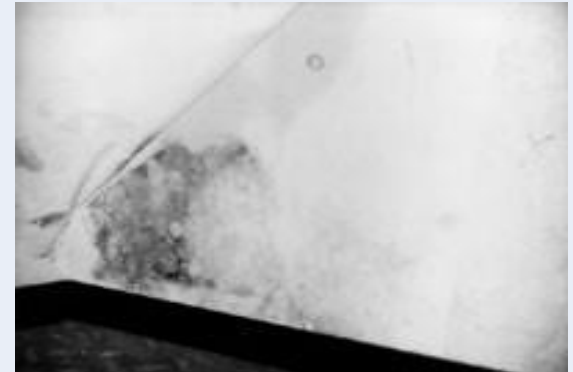


Typiske udfordringer



AirManager Technology™



- effekt på udvalgte svampesporer og vira

<u>AirManager™ performance against continuous input of viral particles</u>					
Organism	Class	Mean cfu/m ³ /Hr at input Treatment stream	Mean cfu/m ³ /Hr post Treatment exit stream	Mean decline Log/cfu/m ³ /Hr post Treatment exit stream	Apparent percentage reduction
CTX	SS DNA	4.3E+12	8.1E+02	>12	>99.999
ScV-L-BC	DS RNA	9.2E+12	4.6E+02	>12	>99.999
FcoV (attenuated)	SS + RNA	7.1E+12	3.0E+02	>12	>99.999
T4 Phage	DS DNA	5.3E+12	7.4E+02	>12	>99.999
S.cerevisiea	Yeast	4.3E+05	0.0E+00	>5	>99.999
S.bailli	Yeast	7.2E+05	0.0E+00	>5	>99.999
Pichia mixed sps	Yeast	6.3E+05	0.0E+00	>5	>99.999
S.ludwigii	Yeast	6.0E+05	0.0E+00	>5	>99.999
A.niger	Mould mycelial	6.2E+05	0.0E+00	>5	>99.999
A.flavus	Mould mycelial	7.8E+05	0.0E+00	>5	>99.999
F.poea	Mould mycelial	7.2E+05	0.0E+00	>5	>99.999
P.digitatum	Mould mycelial	6.9E+05	0.0E+00	>5	>99.999
F graminerium	Mould mycelial	4.3E+05	0.0E+00	>5	>99.999
A.niger	Mould Spore	8.2E+05	7.0E+01	>5	99.991
A.flavus	Mould Spore	6.7E+05	5.0E+01	>5	99.993

F.poea	Mould Spore	8.2E+05	0.0E+00	>5	>99.999
P.digitatum	Mould Spore	6.7E+05	0.0E+00	>5	>99.999
F.graminerium	Mould Spore	2.9E+05	0.0E+00	>5	>99.999

AirManager™ Certified Clean Air

" Uddrag af Appendix K"