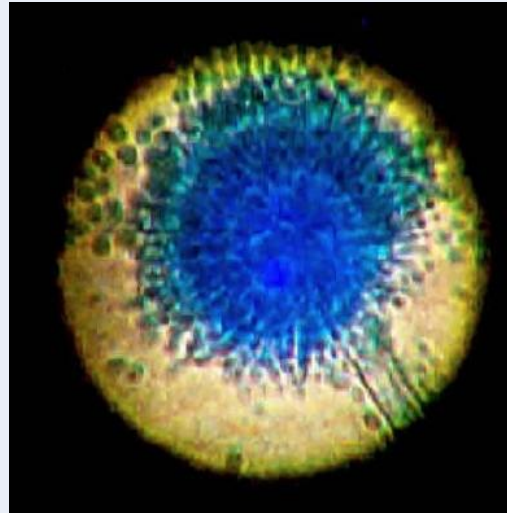
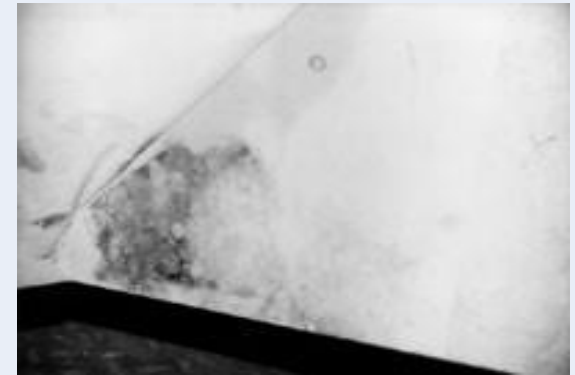


Typiske udfordringer



AirManager Technology™ - effekt på udvalgte bakterier



AirManager™ performance against continuous input of Bacteria and Fungi

Organism	Class	Mean cfu/m ³ /Hr at input Treatment stream	Mean cfu/m ³ /Hr post Treatment exit stream	Mean decline Log/cfu/m ³ /Hr post Treatment exit stream	Apparent percentage reduction
Escherichia coli	Gram -ve	2.1E+05	0.0E+00	>5	>99.999
S.typhi murium	Gram -ve	4.6E+05	0.0E+00	>5	>99.999
E.gergoviae	Gram -ve	4.2E+05	0.0E+00	>5	>99.999
A.aerogens	Gram -ve	7.1E+05	0.0E+00	>5	>99.999
S.marcescens	Gram -ve	8.2E+05	0.0E+00	>5	>99.999
E.sakazakii	Gram -ve	3.4E+05	0.0E+00	>5	>99.999
Ecoli O157 H:7	Gram -ve	3.5E+05	0.0E+00	>5	>99.999
P.aeruginosa	Gram -ve	6.1E+05	0.0E+00	>5	>99.999
P.pufida	Gram -ve	8.2E+05	0.0E+00	>5	>99.999
S.aureus oxford	Gram +ve	4.3E+05	0.0E+00	>5	>99.999
S.aureus MSRA	Gram +ve	4.8E+05	0.0E+00	>5	>99.999
S.epidermidis	Gram +ve	3.7E+05	0.0E+00	>5	>99.999
M.luteus	Gram +ve	9.0E+05	0.0E+00	>5	>99.999
S.faecalis	Gram +ve	7.3E+05	0.0E+00	>5	>99.999

S.pyogenes	Gram +ve	3.6E+05	0.0E+00	>5	>99.999
B.cereus	Gram +ve	7.1E+05	0.0E+00	>5	>99.999
B.globigii	G+ve Spore	7.9E+05	1.0E+01	>5	99.999
B.subtilis	G+ve Spore	2.1E+05	3.0E+01	>5	99.986

AirManager™ Certified Clean Air

" Uddrag af Appendix K"